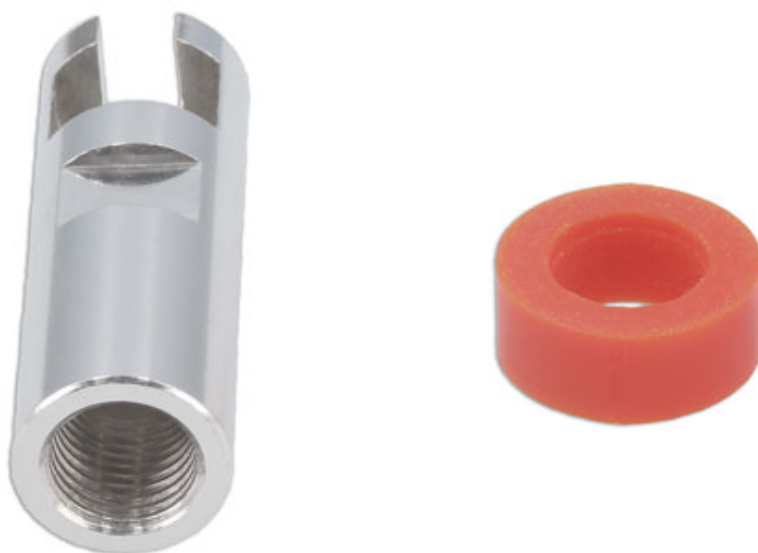


Lift & Pull Glue Pad Adaptor

This adaptor enables glue pads to be fitted to a lever pulling bar, such as the Power-TEC Lift & Pull, allowing for dents and dings in bodywork to be gently pulled out without causing damage to the paintwork.



Additional Information

- Glue Pad adaptor suitable for use with Power-TEC Lift & Pull Dent Kit, Part No. 92377, as part of a hot glue dent removal repair.
- Can be used with other pullers with M14 x 1.5 thread. Manufactured from aluminium.
- Glue pads available separately, please see Part Nos. 91238, 92378, 92401, 92344, 92638, 92637.
- Suitable for use with Power-TEC Glumatic Glue Gun, Part No. 91237 & glue sticks, Part No. 92342.
- For the removal of the glue after use, please see Power-TEC Hot Melt Glue Remover, Part No. 92341.

<http://powertec.co.uk/product/92639>

